

**B4545 MFP**

**OKI®**  
PRINTING SOLUTIONS



**Unparalleled functionality in a mono MFP  
for exceptional small workgroup performance**







## More functionality and ease of use than you've ever experienced in a small workgroup mono MFP

### **The B4545 MFP from OKI Printing Solutions is perfect for the hardworking small workgroup.**

This easy-to-use, affordable device, with its integrated design and robust feature set, promotes a smoother workflow and delivers outstanding value. It helps optimize your budget because you only have to purchase one device instead of many. And its small footprint lets you optimize your office space by using the room more efficiently.

**Duplex color scanning** – Scan both sides of a 2-sided sheet—black & white or color—easily and automatically. The B4545 MFP's reversing auto document feed (RADF) can handle up to 50 duplex sheets. Once scanned, you can save the digital file directly to a folder for future use or distribute it via e-mail or fax, *all without a PC*.

**ID Copy Mode** – With this convenient feature, you can copy both sides of a wallet-sized document onto the same page, saving time and paper.

**The ultimate in walk-up convenience** – For sharing and transporting documents without a PC, the B4545 MFP invites you to use portable USB memory devices. Simply plug your USB flash drive into the MFP's front slot to scan hardcopy documents and save the electronic files onto the USB memory device and take it to an important meeting, on a business trip, or to a home office.

The B4545 MFP also allows you to print selected file formats directly from a USB flash drive, without the need of a PC.

**A full QWERTY keyboard** – The B4545 MFP makes it fast and simple to e-mail, fax and distribute files. The user-friendly control panel has a familiar keyboard for easy typing, as well as a keypad for numeric entries, so e-mail addresses and network (LAN) or analog fax destinations can be entered quickly and precisely.

**LDAP support standard** – Choose multiple recipients from your e-mail or fax address books or your shared corporate address books via LDAP. Or just type in individual addresses, and e-mail or fax documents directly from the operator panel.

**Upgrade as you grow** – Should your business demands change, the B4545 MFP grows with you: add on automatic duplex (2-sided) printing and a 500-sheet 2nd paper tray. Save on paper costs by printing on both sides of the sheet, and the expanded paper capacity of 750 sheets lets you get more done with fewer interventions.

**Enjoy unmatched support and technical expertise** – You can expect total support from your Authorized OKI Printing Solutions MFP provider. If you need technical assistance, you can speak to a live expert based in North America, 24/7/365, by calling toll-free: **800.OKI.DATA** (800.654.3282).<sup>2</sup>

**The B4545 MFP from OKI Printing Solutions: unequalled versatility to keep your workgroup's productivity humming.**

### **B4545 MFP Highlights:**

- 50-sheet RADF (reversing auto document feeder) for duplex (2-sided) scanning—even in color
- Scan files directly to e-mail/network for sharing and archiving
- LDAP support for access to corporate e-mail directories, standard
- Scan to/Print from USB flash drives via convenient front port
- Full QWERTY keyboard
- ID Copy Mode setting enables copying both sides of wallet-sized documents on the same page
- Network-ready out of the box
- Full-featured analog fax
- 250-sheet standard paper capacity
- 21 ppm printing/copying speed<sup>1</sup>
- PIN access for keyboard lock, copy lock, e-mail sending control
- Separate 6,000-page toner cartridge, 20,000-page image drum
- 1-Year Overnight Exchange limited warranty<sup>2</sup>

<sup>1</sup> Published performance results based on laboratory testing. Individual results may vary.

<sup>2</sup> Available in the U.S. and Canada only.

# The B4545 MFP Digital Mono Multifunction Product brings versatility and ease of use to your small workgroups—and cost savings to your company.



**PIN access** gives you control over the way your workgroup uses it, with access to the keyboard, copying, and e-mail granted or restricted at your discretion.

## Take control of the way your MFP is used –

The B4545 MFP allows an administrator to grant or restrict scanning and/or copying access to individuals or groups of users.

Simply assign individual PIN identification codes to your personnel, according to their privileges. They can unlock the restricted functions—with your permission—by entering their PIN codes into the machine's control panel.

**Improve your bottom line** – The B4545 MFP delivers cost-effective operation as well as an exceptional return on your investment.

Its outstanding reliability and long-lasting consumables help you control operating costs and improve productivity:

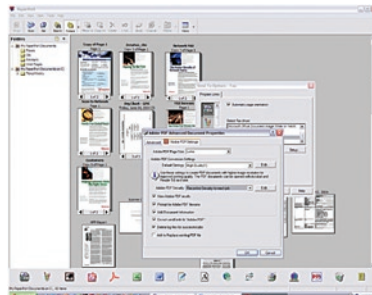
- Support one device rather than several
- Stock fewer replacement supplies
- Reduce user interventions



**Low operating cost** is another advantage of the B4545 MFP, made possible by long-lasting, separate consumables (toner cartridge and image drum) from OKI Printing Solutions.

**Document management made simple** – The B4545 MFP comes with software that lets you easily turn piles of paper and photos into PDF and JPEG files—using the MFP's scanner—and save them to your computer for future use.

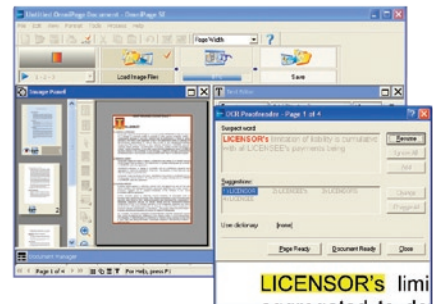
Also standard is a precision optical character recognition (OCR) program to quickly turn office documents and forms into electronic files for editing, searching and sharing.



**PaperPort®** is a scanning and document management application that turns paper into digital content.



**Duplex color scanning** lets you scan both sides of a color document automatically, creating a digital file you can share, e-mail, import as a graphic, and archive.



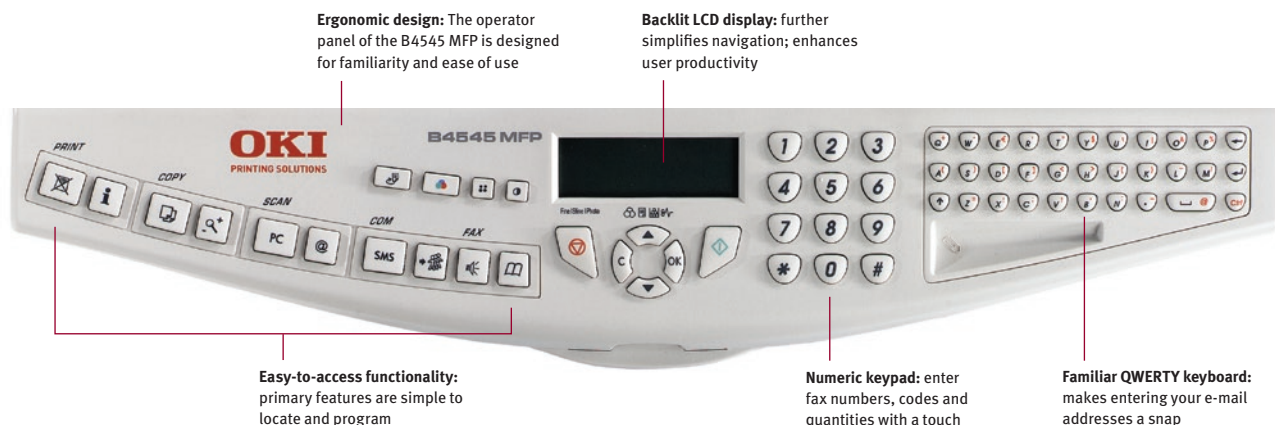
**OmniPage®** converts paper into editable electronic documents, saving you time and increasing your productivity.

**Feel like a customer again** – OKI Printing Solutions understands the needs of today's businesses. We listen to our end users and provide the solutions that can increase their performance while improving their bottom line.

Your total satisfaction with our products and support is the driving force behind all we do.

**The user-friendly operator panel** of the B4545 MFP puts the device's full functionality at your fingertips.

It features a clear, organized array of navigation buttons, a backlit LCD display, numeric keypad and full QWERTY keyboard—enabling quick and easy input of e-mail/fax addresses, codes and instructions.





# B4545 MFP

## Specifications

### Printer

- **Print Speed:** Up to 21 ppm<sup>1</sup>
- **Time to First Page:** As fast as 13 seconds<sup>1</sup>
- **Print Resolution:** 600 x 600 dpi
- **Processor Speed:** 92 MHz
- **Duty Cycle:** 12,500 prints/copies per month
- **Connectivity:** USB v2.0 port; 10/100 Base-T Ethernet (network)
- **Emulations:** PCL® 5e, PCL 6; PostScript® 3™
- **Operating Systems:** Windows® 98, ME, 2000 and XP
- **Networking Utilities:** Companion Suite Pro – provides consumables status, digitizes color or black & white documents, and manages incoming/outgoing faxes from PC desktop
- **Fonts:** 78 PCL, 35 PostScript, 8 bitmap
- **Duplex (2-Sided) Printing:** Optional<sup>2</sup>
- **Print from USB Flash Drive:** printing directly from front USB port; supports JPEG, TIFF and TXT file formats

### Copier

- **Copy Speed:** Up to 21 cpm<sup>1</sup>
- **First Copy Out:** As fast as 15 seconds<sup>1</sup>
- **Copy Resolution:** 600 x 600 dpi
- **Copy Scaling:** 25% to 400%
- **Copy Quantity Selection:** 1-99 sorted
- **ID Copy Mode:** Copies both sides of wallet-size documents onto one page
- **Duplex Copying:** Optional<sup>2</sup>

### Scanner

- **Scan Type:** Color and Black & White
- **Scan Speed:** As fast as 1.8 sec./pg. Black & White; 16 sec./pg. Color
- **Scan Resolution:** 600 x 2400 dpi
- **Scan-to-PC:** Create electronic file from hard copy original (TWAIN scanning driver included; Windows compatible)
- **Address Book Management:** LDAP (Lightweight Directory Access Protocol) and/or user defined
- **Scan-to Functionality:** Scan to e-mail with LDAP support and without PC; to USB flash drive (PDF and TIFF); to FTP sites
- **TWAIN Driver:** Windows 98 and higher
- **Duplex Scanning:** Standard
- **Networking Utilities:** Companion Suite Pro – access features and settings of the MFP; set up Scan-to-FTP and Scan-to-E-mail; apply scanning restrictions; configure and manage multiple Scan-to-FTP profiles

## Document Management

- **Utilities:** Nuance® PaperPort® v.10 standard; Network printing; Scan to OCR (OmniPage® SE 3.0)

### Fax

- **Fax Modem:** 33.6 Kbps Super G3
- **Transmission Speed:** 2.5 seconds<sup>1</sup>
- **Network Fax:** Yes
- **Broadcast Dials:** up to 499
- **Fax Memory:** 500 pages (8 MB)
- **Fax Functions:** Broadcasting, Polling, Activity report (sending/ receiving), Fax transmission forwarding, Error correction mode (ECM), Directory (up to 500 numbers), Multi-tasking
- **Fax Server:** T.37 (seamless integration with Sagem-Interstar XMediusFAX® fax server software)

### System Memory

- **Standard/Max Imaging RAM:** 64 MB

### Paper Handling

- **Scanner ADF:** Up to 50 letter/legal sheets (16 lb. – 24 lb.)
- **Min./Max. Page Size:** 4.1" x 5.8"/8.5" x 14"
- **Standard Printer Input:** 250 sheets
- **Optional 2nd Paper Tray:** 500 sheets (total 750 sheets)
- **Bypass Tray:** 10 sheets
- **Paper Sizes:** Letter, Legal, Executive, A4, A5; Envelopes – B5, C5, C6, DL, Monarch, COM 10
- **Paper Weight:** Main and Optional 2nd Trays 16 lb. – 24 lb. (60–90 gsm); Bypass Tray 16 lb. Bond – 90 lb. Index (60–163 gsm)

### Environmental

- **Size (WxDxH):** 17.9" x 17.5" x 20.5" (45.5 cm x 44.5 cm x 52.0 cm)
- **Weight:** 32.0 lb. (14.5 kg)
- **Power Consumption:** Operating 580W, Idle 20W, Power Save 15W
- **Acoustic Noise:** Operating (Printing/Scanning/Copying) <55 dB(A); Standby – Ambient noise

### Warranty

- **System:** 1-Year Limited Warranty with Overnight Exchange<sup>3</sup>

**For more information** on the B4545 MFP Mono Multifunction Product and supplies—including OKIcare warranty extensions—please call us at **1.800.OKI.DATA** (800.654.3282)<sup>3</sup> or visit our website: [www.okiprintingsolutions.com/us](http://www.okiprintingsolutions.com/us)

<sup>1</sup> Published performance results based on laboratory testing. Individual results may vary.

<sup>2</sup> Optional Duplex unit requires optional 2nd Paper Tray.

<sup>3</sup> Available in the U.S. and Canada only.

<sup>4</sup> Estimated life, based on ISO 19752. Unit ships with 2,000-page "starter" toner cartridge.

## Ordering Information

Description	Part Numbers
B4545 MFP 120V (Multilingual)	62427901
B4545 MFP with Duplex Unit and High-Capacity Letter Tray Bundle 120V (Multilingual)	62427906
<b>Options</b>	
High-Capacity Letter Tray	70052101
Duplex Unit <sup>2</sup>	70052201
<b>Supplies</b>	
Toner Cartridge	6,000 pg. <sup>4</sup> 52116101
Image Drum	20,000 pg. 56120301
<b>OKIcare® Overnight Exchange Warranty Extensions<sup>3</sup></b>	
B4545 MFP 1-Yr. Warranty Extension	58278501
B4545 MFP 2-Yr. Warranty Extension	58278502
B4545 MFP Upgrade to On-Site	58278908
<b>OKIcare On-Site Warranty Extensions<sup>3</sup></b>	
B4545 MFP 1-Yr. Warranty Extension	58278901
B4545 MFP 2-Yr. Warranty Extension	58278902

Specifications are subject to change without notice.

Featured products may not be available in all countries. Please contact your local office for regional availability.

©2007 Oki Data Americas, Inc. OKI Reg. T.M., M.D., Oki Electric Industry Co., Ltd. Windows, Windows NT Reg. T.M., Microsoft Corp. PCL Reg. T.M., Hewlett Packard Co. PostScript Reg. T.M., PostScript 3 T.M., Adobe Systems, Inc. XMediusFax Reg. T.M., Sagem-Interstar, Inc. Nuance, PaperPort, OmniPage Reg. T.M., Nuance Communications, Inc. Energy Star Reg. T.M., U.S. EPA.



## OKI DATA AMERICAS, INC.

**USA**  
2000 BISHOPS GATE BLVD.  
MOUNT LAUREL, NJ 08054-4620  
TEL: 800.OKI.DATA (800.654.3282)  
FAX: 856.222.5320

**CANADA**  
2735 MATHESON BLVD. EAST  
MISSISSAUGA, ONTARIO L4W 4M8  
TEL: 905.238.4250  
FAX: 905.238.4421

**LATIN AMERICA**  
2000 BISHOPS GATE BLVD.  
MOUNT LAUREL, NJ 08054-4620  
TEL: 856.231.0002  
FAX: 856.222.5071

**OKI DATA DE MÉXICO, S.A. DE C.V.**  
MARIANO ESCOBEDO, 748 8º PISO  
COL. NUEVA ANZURES C.P. 11590  
MÉXICO, D.F.  
TEL: 55.5263.8780  
FAX: 55.5250.3501

**OKI DATA DO BRASIL INFORMÁTICA LTDA.**  
AV. ALFREDO EGÍDIO DE SOUZA ARANHA, 100  
BLOCO C – 4º ANDAR  
04726-170 – SÃO PAULO – SP – BRASIL  
TEL: 11.3444.3500  
FAX: 11.3444.3502

[WWW.OKIPRINTINGSOLUTIONS.COM](http://WWW.OKIPRINTINGSOLUTIONS.COM)

