

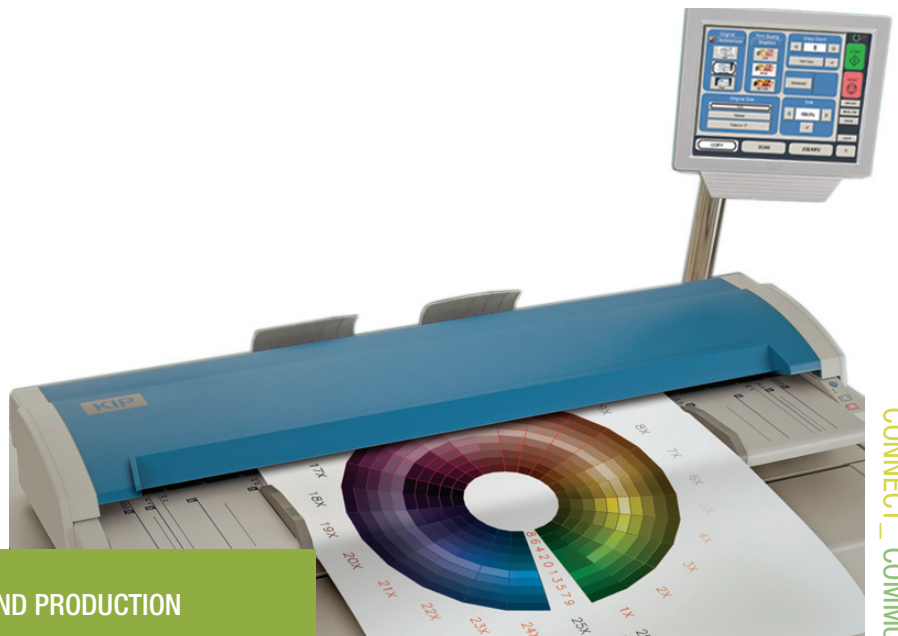


KONICA MINOLTA

## KIP 5000 Series

**MODULAR, INTEGRATED HIGH DEMAND PRODUCTION SYSTEMS.**

The KIP 5000 series is a range of versatile digital imaging systems designed to provide a combination of peak demand productivity and superior image quality to satisfy demanding document imaging environments.



CONNECT \_ COMMUNICATE \_ CONTROL \_

# WIDE

FORMAT

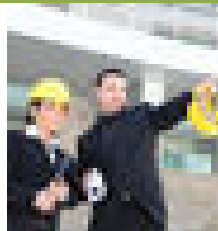


business\_by design

## KIP 5000 SERIES SYSTEMS: high demand production systems

KIP 5000 systems feature a full suite of state of the art printing, copying and scanning software to ensure excellent performance across all monochrome and color imaging applications.

The KIP 5000 is available in three main configurations: KIP 5000 Print System, KIP 5000 Print, Copy & Scan System and KIP 5200 Production System.



**KIP 5000 Print System.** The KIP 5000 network printer is designed to provide a combination of peak demand productivity and superior print quality. The system efficiently produces documents sent via application drivers, network PCs, or over the internet. The KIP 5000 meets the toughest printing demands and may be easily upgraded to handle copying and scanning requirements in virtually any digital imaging environment



**KIP 5000 Print, Copy and Scan System.** The KIP 5000 system performs the full range of monochrome and color scanning applications, providing the capability to scan all types of documents for use at network PCs, or copy directly to inkjet printers. In addition, monochrome technical documents containing lines, text, grayscales and graphic images are quickly and accurately printed, copied, or scanned by the KIP 5000.





**KIP 5200 Modular Production System.** The KIP 5200 system is a professional grade monochrome print and mono/color copy & scan solution that provides high demand users with the ultimate in imaging technology. Featuring a full suite of production printing, copying and scanning software, the KIP 5200 system expertly performs all monochrome and color imaging applications. Thanks to a robust document imaging system, complex graphics and photos are reproduced as accurately and efficiently as simple line drawings. The KIP 5200 system may be configured as a compact integrated system, or split into separate printing and scanning stations for maximum productivity!

## KIP 5000 PRINTER KEY FEATURES

- ▶ Prints 8 'D' size sheets per minute at 600 x 600 dpi resolution
- ▶ 100% toner efficient operation from 2 or 4 media rolls
- ▶ Integrated touch screen display provides advanced system management
- ▶ KIP software and application drivers included with each system

## KIP 5000 PRINT, COPY AND SCAN KEY FEATURES

- ▶ Single, space saving system footprint with no need for additional PCs
- ▶ Create color copies directly to inkjet printers
- ▶ Scan documents into a wide range of monochrome and color file formats
- ▶ Image presets with real time copy and scan previews provide maximum quality control

## KIP 5000 PRODUCTION SYSTEM KEY FEATURES

- ▶ Exceptionally durable scanner construction ensures reliable operation and consistent image quality for production environments
- ▶ Covers the full range of monochrome and color imaging applications without sacrificing speed or resolution
- ▶ KIP technology delivers enhanced monochrome images with maximum fine line and grayscale accuracy
- ▶ Create superior copies to inkjet printers and accurate scans from complex color originals
- ▶ Copy and print to multiple inkjets to maximize production of high quality, color matched copies
- ▶ Color copy capabilities include image paneling and nesting for optimum media usage with optional KIP Color Max software
- ▶ View and print digital files using advanced color management and image editing features with optional KIP Color Max software

## KIP 5000 SERIES: KIP 5000 print system



**Monochrome Printing** The KIP 5000 printer is a 600 dpi two or four roll 36" wide format printer with a cut-sheet bypass tray for single prints or copies on specialty media. The KIP 5000 media capacity is field upgradable, allowing roll drawers to be added according to printing requirements.

**KIP High Definition Print Technology (HDP).** The KIP 5000 printer features KIP High Definition Print Technology (HDP) for the highest quality monochrome images. KIP HDP Technology allows the KIP 5000 to reproduce the full spectrum of technical, engineering and architectural documents with complete accuracy and confidence.

**Image Processing System** The KIP Image Processing Software suite delivers a wide range of printing benefits; including web-based & network printing, application drivers, automated metering, remote system monitoring and simple user operation.

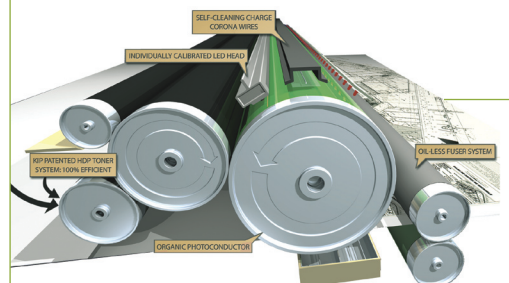
**Expandable Technology** Start with a network printer and add copy and scan capabilities to grow with business demands. The KIP 5000 has been designed to deliver unrivaled quality and flexibility to meet the ever increasing demand for accurate and cost effective wide format document reproduction..

## KIP 5000 PRINTER FEATURES

- ▶ Integrated touch screen operator panel
- ▶ 600 x 600 dpi resolution
- ▶ Production speed of 8 'D' size prints per minute
- ▶ 2 or 4 roll upgradeable media capacity
- ▶ High definition line quality
- ▶ Distinctive grayscales & solid areas
- ▶ 100% toner efficiency
- ▶ Expanded duty cycle
- ▶ Energy Star qualified
- ▶ Environmentally friendly

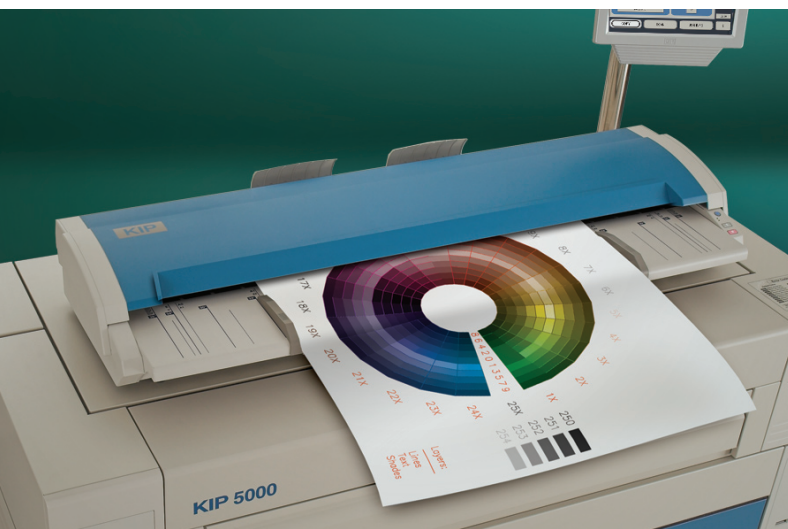


- ▶ Automatic file format detection
- ▶ Supports all standard raster and vector formats
- ▶ Integrated DWF file format support
- ▶ PDF & Postscript file viewing and printing
- ▶ Communicate with PCs, print-servers, switching equipment, hubs and other network capable devices.
- ▶ Windows network connectivity via TCP/IP protocol
- ▶ Unix/Linux and Novell network connectivity spooled through LPR/LPD
- ▶ Apple network connectivity via LPR/LPD



KIP High Definition Print Technology delivers crisp line detail, solid blacks and consistent gray scales.





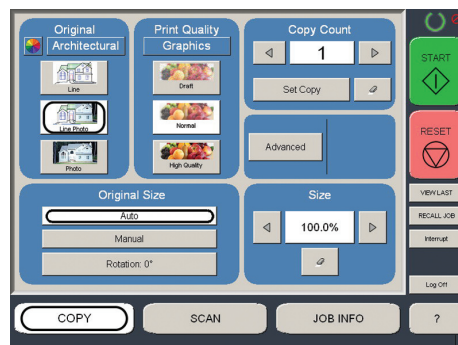
## KIP 5000 SERIES:

### KIP 5000 print, copy & scan system

#### KIP 5000 SYSTEM FEATURES

- Space saving single footprint
- The KIP 5000 copies the full range of monochrome originals
- Create copy sets from unlimited number of originals
- Direct color copies to a wide range of inkjet printers
- Closed-loop color calibration system ensures copy accuracy
- Designate image size, rotation and file name
- Preset quality selections for line, line/photo, and photo original types
- Scan to single or multi page TIFF and PDF formats for maximum flexibility

#### KIP 5000 Series Copy Interface



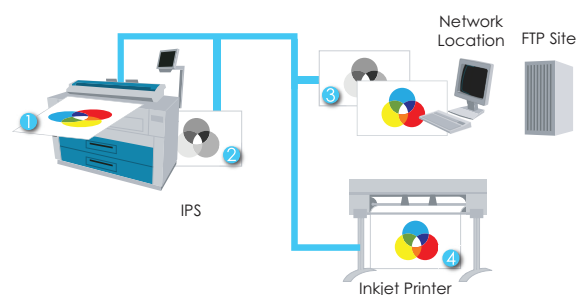
**Monochrome Copying and Scanning** The KIP 5000 system accurately reproduces the full range of monochrome technical drawings, graphic renderings, maps and photographs. A range of convenient preset quality controls are available to assist operators with making proper monochrome imaging adjustments. To ensure maximum clarity, the system dynamically adjusts exposure settings during all monochrome copying and scanning applications.

**Color Scanning** In addition to the full range of monochrome imaging features, the system provides the capability to scan color documents into a variety of high resolution file formats for use at PC workstations. Once scanning is complete, the image files are automatically delivered to the operator's choice of destination; network location, FTP site, or personal project inbox.

**Color Copying** Fully integrated with a range of inkjet printers, the KIP 5000 print, copy and scan system delivers high quality color copies from all types of original documents. A unique closed-loop color calibration system ensures the highest level of copy accuracy based on the individual color capabilities and characteristics of each inkjet printer..

#### MONO/COLOR COPYING AND SCANNING

- 1 Monochrome or color document is inserted into scanner to begin the imaging process
- 2 Monochrome copies are produced by the KIP 5000 System
- 3 Monochrome or color scanned image files may be directly transmitted to a specified network location, such as a server or the operator's PC
- 4 Direct color copies are produced by the inkjet printer





## KIP 5000 SERIES: KIP 5200 modular production system

**Production Imaging.** The KIP 5200 system employs highly advanced imaging technologies to deliver outstanding clarity and maximum production speed. In addition, a uniquely durable design and quality construction ensure reliable operation and consistent quality in high production imaging environments.

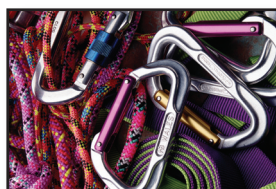
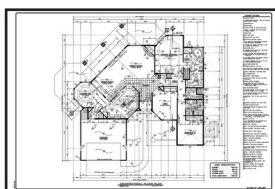
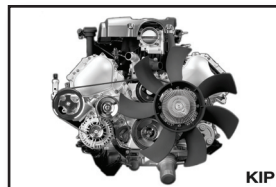
**Enhanced Monochrome Image Quality** The KIP 5200 system makes monochrome technical documents look better than ever. Exclusive KIP imaging technology creates crisp, black and white prints, copies and scans from all types of monochrome technical drawings, photographs, maps and graphic renderings. An advanced grayscale mode captures the full range of gray with no image drop-out or down sampling and is ideal for making accurate photo reproductions on inkjet printers.

**World Class Color Quality** The KIP 5200 system features professional grade, 24-Bit color imaging to ensure the highest quality color photo and graphical reproductions. Create high resolution color copies on inkjet printers, or scan extremely detailed color originals into a variety of file formats appropriate for E-mail, archive and printing purposes.

**KIP Color Max Software** This powerful software package delivers advanced copying and scanning features and also includes the ability to RIP files to print. Users may print in monochrome or color to multiple printers, ensuring speed, flexibility and accurate production of high-quality color matched copies. KIP Color Max software provides advanced color management features and professional image editing tools that allow you perform difficult tasks easily and with consistent results from one job to the next.

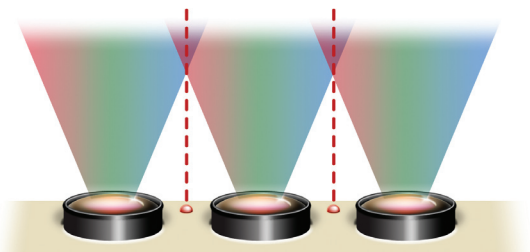
### KIP 5200 PRODUCTION FEATURES

- ▶ True 600 x 600 dpi optical resolution
- ▶ 24-Bit RGB True Color image capture
- ▶ Three independent imaging cameras
- ▶ KIP Real Time Thresholding technology
- ▶ Automatic image despeckling
- ▶ Monochrome image background removal
- ▶ Self-calibrating maintenance systems
- ▶ Advanced laser alignment camera system
- ▶ 24 Month optical system warranty



The full spectrum of monochrome and color documents can be reproduced with the KIP 5200.

Three independent imaging cameras with an advanced laser alignment system and self calibrating diagnostics provide an extraordinary level of quality.





## Kip 5000 Series System Configurations



KIP 5200 Mono/Color Print Copy & Scan System

KIP 5200 Modular System with KIP Color Max & Scan System

KIP 5200 Mono Scan Speed

DPI	Monochrome Scan Speed	
600 x 600	3.2" / sec	16' / min
400 x 400	4.8" / sec	24' / min
300 x 300	6.4" / sec	32' / min
200 x 200	9.6" / sec	48' / min

KIP 5200 Color Scan Speed

DPI	Color Scan Speed	
600 x 600	1.4" / sec	7' / min
400 x 400	2.0" / sec	10' / min
300 x 300	2.8" / sec	14' / min
200 x 200	3.4" / sec	17' / min



### Monochrome Imaging

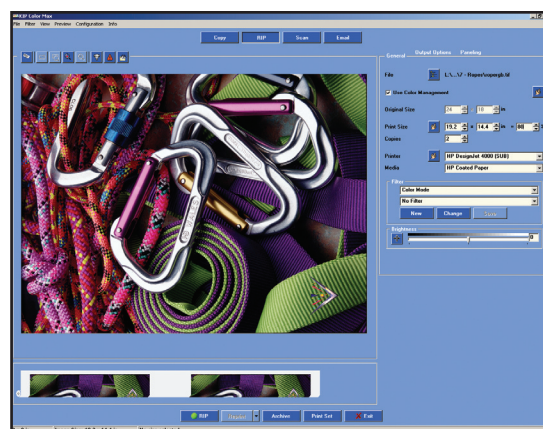
- Monochrome scan speeds up to 9.6" per second!
- Stream-feed an unlimited number of originals when producing collated sets
- Create single or multi page digital files; including PDF and DWF
- Preset quality selections for line, grayscale and photo originals
- Advanced KIP imaging technologies deliver superior results

### Color Imaging

- Color scan speeds up to 3.4" per second!
- High resolution, 24-Bit color image quality
- Copy directly to inkjet printers, or create color digital files
- Easy system calibration process ensures color copy and scan accuracy
- Increase system functionality with KIP Color Max software

## KIP COLOR MAX IMAGING FEATURES

- ▶ Advanced Color Management
- ▶ Custom Quality Filters
- ▶ Multiple Inkjet Integration
- ▶ Image Nesting
- ▶ Image Editor
- ▶ Print to Inkjet (RIP)
- ▶ Print Collated Color Sets
- ▶ Image Deskew
- ▶ Image Despeckle
- ▶ Area Crop
- ▶ Wipeout / Mask
- ▶ Scan to E-mail
- ▶ Print and Copy Paneling
- ▶ Spectrophotometer Support

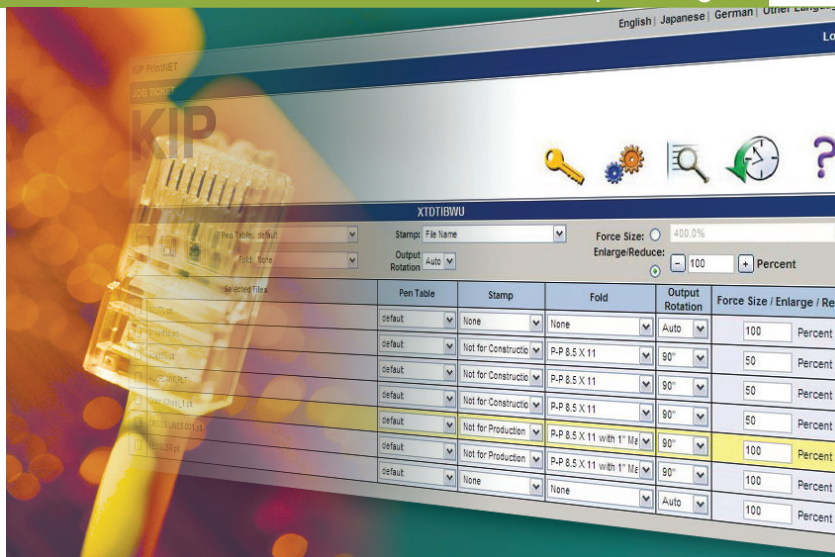


KIP Color Max provides advanced copying, scanning and printing of all monochrome and color documents.



## KIP 5000 SERIES:

### KIP 5000 series web based & network printing



**KIP PrintNET.** KIP PrintNET is a true web-based utility designed to streamline KIP wide format document production across wide-area printing environments. KIP PrintNET delivers versatile viewing, printing, job queue management and system administration features via the server without the need to install specialized applications on network PCs.

**What You See Is What You Print.** The integrated, cross-platform PrintNET viewer is operating system independent, quickly displaying images in crisp grayscale for accurate representation of graphics, photos and fine lines. Integrated image viewing provides instant file authentication and an accurate representation of the final printed product with custom image settings.

**Account For Everything.** KIP PrintNET generates customizable reports detailing all system usage at preset intervals or on demand at any time. These reports contain data compatible with spreadsheet applications for easy customization and analysis.

**System Information Delivered To You.** Advanced diagnostic systems eliminate potential print delays by providing designated operators with system status alerts via email or text messaging if paper or toner replenishment is needed.



## PRINTNET KEY FEATURES

The integrated PrintNET viewer displays accurate graphics, photos and fine lines

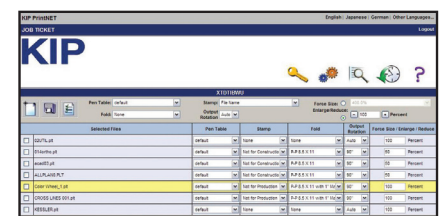
Create print jobs from Windows, Apple, Novell and Unix/Linux based web browsers

User name and password authentication system designed for maximum network security

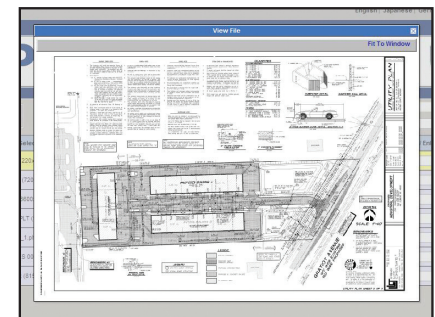
Apply printing preferences on a per-file basis or to a complete print job

Accurate individual, departmental and project specific accounting information

Operates in mixed environments of client PC operating systems



Use KIP PrintNET to print and manage all jobs via the internet



View all files before printing with KIP PrintNET





**KIP Request.** KIP Request network printing software is an easy to use printing application designed to provide network users with a fast and accurate means of producing high quality prints from all types of file formats. Every aspect of KIP Request is centered on efficient workflow, providing complete command of a host of powerful printing and print management features. Users may preview print jobs, make image adjustments, set document folding parameters, enter accounting data, manage the print queue and send files to various KIP printers on the network via a single interface.

#### KIP Windows Driver Features

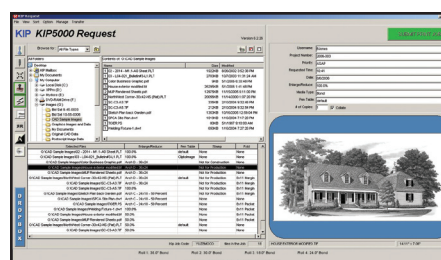
- Intelligent, 2-way communication with KIP 7200 system
- Displays current media information and real time system status
- Print in monochrome and grayscale
- 100, 200, 400 and 600 dpi selection
- Selection of folding parameters
- 64-Bit operating system compatibility
- 1 - 999 copies or collated sets
- Label documents with user name, job number and data tracking information
- Job accounting and data tracking includes user name, job number and data tracking information
- Print from design, project management and markup applications

#### KIP AutoCAD Driver Features

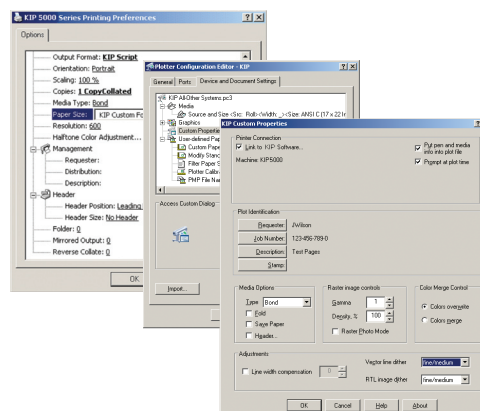
- ADI and HDI drivers for AutoCAD
- Displays current media information and real time system status
- Raster image control to adjust gamma and density levels for embedded raster data
- Data tracking for job accounting including user name, job number, and description fields
- User and job number passwords may be required before printing
- Select bond, vellum, film or custom media
- Image stamping allows placement of text and/or stored images anywhere on the document

## REQUEST KEY FEATURES

- ▶ Automatic file format detection
- ▶ Standard raster and vector file format support
- ▶ Integrated image viewer
- ▶ User name and password security system
- ▶ Powerful print tracking and job accounting tools
- ▶ Fast file processing for maximum productivity
- ▶ Individual print rotation within a collated set
- ▶ Advanced folding features



#### KIP Request user interface



#### Windows and AutoCAD Drivers



#### Integrated DWF Printing



## KIP 5000 SERIES:

### KIP 5000 series system operations

**KIP IPS.** The KIP Image Processing System is a combination of processing power and flexible software applications designed for maximum productivity and ease-of-use. Applications are available on PC workstations, over the internet and at the KIP 5000 touch screen operator panel, providing a uniform user interface across the entire KIP digital product range. All applications have been designed to provide exceptional versatility, fast file processing and efficient use of network resources to maintain high productivity.

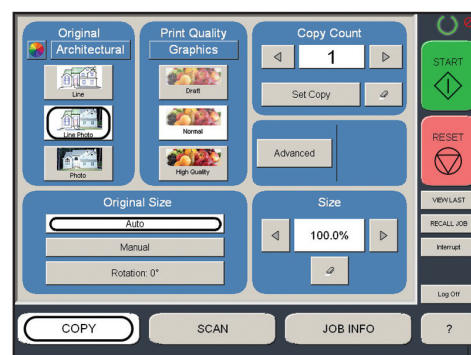
**Automated Metering System.** All KIP printing, copying, and scanning applications are connected via an integrated system designed to record and account the use of all system functions. Customizable reports detailing total system usage are delivered via E-mail on demand, or at designated intervals.

**Easy Administration.** In addition to the thoughtfully designed interface, users and administrators benefit from an array of sophisticated, easy-to-use queue management and accounting tools designed to meet today's most challenging network security demands.

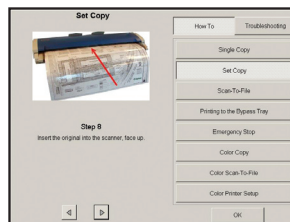
**Information Center.** The KIP 5000 is configured to display contact information specific to the KIP authorized service provider. This feature is designed to assist operators when requesting consumables, service calls and system upgrades.

**System Guides.** The KIP 5000 operator panel displays illustrated guides to explain system operations including mono/color copy and scan-to-file functions. In addition, step-by-step media and toner replacement procedures are automatically displayed when necessary to provide users with system instructions. The KIP System Guide is available at the KIP 5000 operator panel and downloadable via KIP PrintNET to assist operators by providing a quick reference resource for all KIP application features.

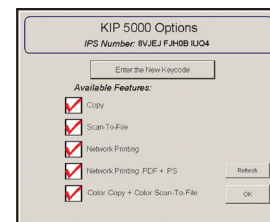
**System Upgrades.** All KIP 5000 configurations are available as two or four roll systems. Each configuration may be easily field upgraded to provide new system features at any time, including mono/color scan-to-file and copy.



KIP 5000 Series touch screen interface



Easy to understand illustrated operator guides



Instant keycode upgrades





**KIPFold 5000.** The KIPFold 5000 system automates document finishing requirements by providing folding, stacking and collation in a compact design. The system intelligently communicates with the KIP 5000 IPS and is fully integrated with all KIP copying and printing applications and drivers to provide seamless workflow integration.

#### KIPFold 5000 Packet Standards

Architectural Print Sizes: 12" x 18", 18" x 24", 24" x 36", 36" x 48", 30" x 42"

Engineering Print Sizes: 11" x 17", 17" x 22", 22" x 34", 34" x 44"

Metric Print Sizes: A3 - A0

Folded Packet Sizes: 8.5" x 11", 9" x 12" or 210 mm x 297 mm

Margin: 0" - 2", 0 - 50 mm user selectable

Packet Orientation: Portrait or Landscape (Arch., Eng.) Portrait (Metric)

#### Fold Types

The KIPFold 5000 provides the flexibility to fold copies and prints into all architectural, engineering and metric standard packet sizes. Prints are accepted in either landscape or portrait format, allowing for fast and efficient folding operations. In addition, users may specify individual packet orientation - landscape or portrait.

#### KIP Stacking Solutions

The KIP 5000 is compatible with a range of stacking solutions designed to deliver print output just the way you want it. Consistent, accurate and reliable KIP stackers deliver maximum document control with minimum effort. From simple print catchers to intelligent online stacking systems, KIP solutions can be easily tailored to suit your exact needs, while maintaining the flexibility to grow as demands increase.



KIP 200 Stacker Stacks 250 A-E size prints



KIP 300 Stacker Stacks 350 A-E size prints



KIP 1200 Stacker Stacks 1000 A-E size prints

# KIP 5000 SERIES:

## system configurations

**Engineered for Sustainability.** KIP is committed to product designs that promote environmental health and sustainability. Our goal is to consistently improve and refine the technologies in KIP products that keep our planet green.

### KIP PRINTERS AND SYSTEMS FEATURE THESE EARTH CONSCIENTIOUS ASPECTS

- Energy Star Qualified
- ROHS Compliance
- ISO 14001 Standards
- Ozone Emissions Filters
- UL/UL-C Approved
- 100% Toner Efficiency—No Waste Toner
- Organic, Recyclable Photoreceptors
- Recyclable Toner Containers
- Prints on Recycled Paper
- Automatic Image Rotation and Media Selection Ensure Minimal Paper Waste



©2008 KONICA MINOLTA BUSINESS SOLUTIONS U.S.A., INC.  
All rights reserved. Reproduction in whole or in part without written permission is prohibited. Konica Minolta is a trademark of KONICA MINOLTA HOLDINGS, INC. The essentials of imaging is a registered trademark of KONICA MINOLTA HOLDINGS, INC. All other brands and product names are registered trademarks or trademarks of their respective owners. KIP and KIP 5000 are registered trademarks of KIP.

Design & specifications are subject to change without notice.



**KONICA MINOLTA**

KONICA MINOLTA  
BUSINESS SOLUTIONS U.S.A., INC.  
100 Williams Drive  
Ramsey, NJ 07446  
[www.kmbs.konicaminolta.us](http://www.kmbs.konicaminolta.us)

### KIP 5000 PRINT SYSTEM

	Standard	Optional
Mono Printing	•	
PDF Printing		•
Folding		•

### KIP 5000 COPY & PRINT SYSTEM

	Standard	Optional
Mono Printing	•	
Mono Copy	•	
PDF Printing		•
Folding		•

### KIP 5000 COPY, PRINT & SCAN SYSTEM

	Standard	Optional
Mono Printing	•	
Mono Copy	•	
Mono Scan	•	
Color Copy		•
Color Scan		•
PDF Printing		•
Folding		•

### KIP 5200 MONOCHROME COPY, PRINT & SCAN SYSTEM

	Standard	Optional
Mono Printing	•	
Mono Copy	•	
Mono Scan	•	
Color Copy & Scan		•
PDF Printing		•
Folding		•
KIP Color MAX		•

### KIP 5200 MONO/COLOR COPY, PRINT & SCAN SYSTEM

	Standard	Optional
Mono Printing	•	
Mono Copy	•	
Mono Scan	•	
Color Copy & Scan	•	
PDF Printing		•
Folding		•
KIP Color MAX		•